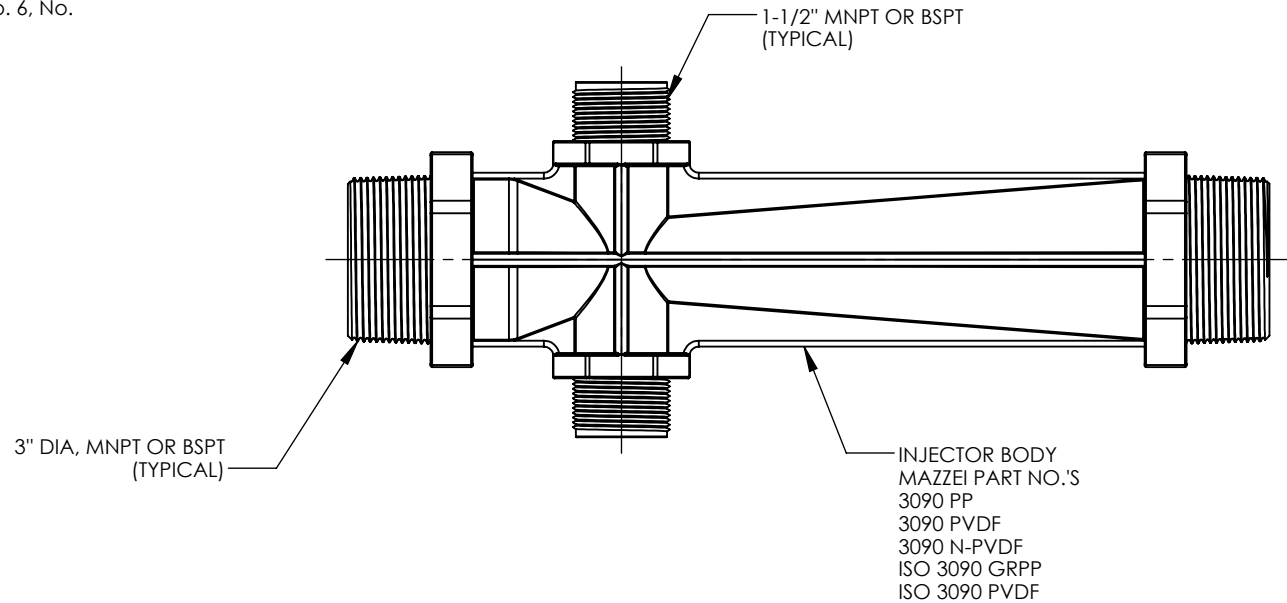
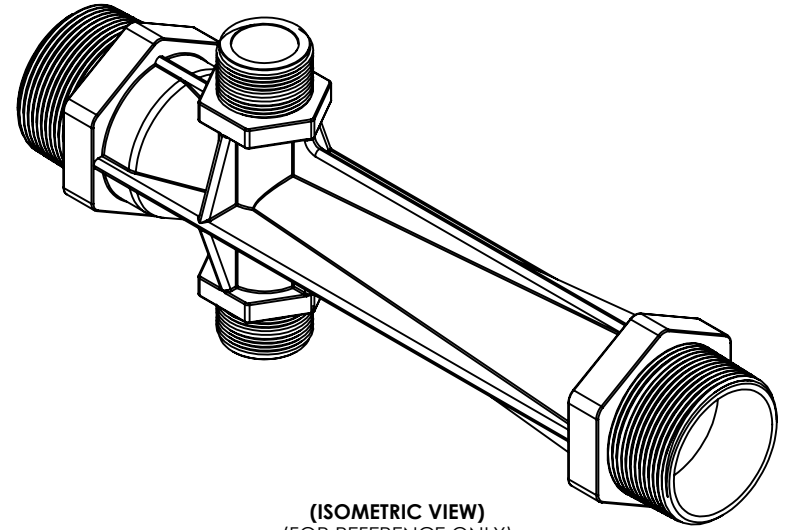


NOTES:

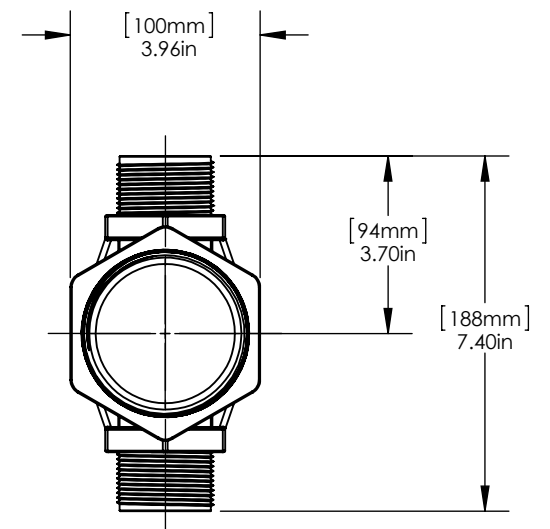
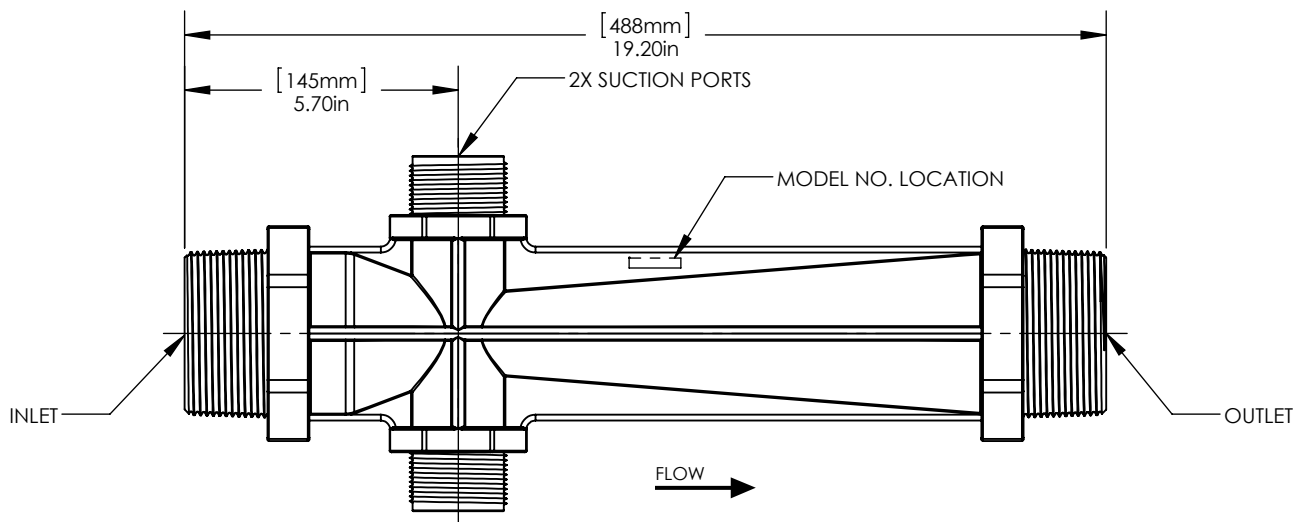
1. MADE IN THE U.S.A.
2. U.S. PATENT No. 5,863,128
3. U.S. No. 3,852,076 AND INTERNATIONAL REGISTERED TRADEMARKS
4. MATERIAL: GLASS FILLED POLYPROPYLENE (PP) OR POLYVINYLIDENE FLUORIDE (PVDF) OR NATURAL POLYVINYLIDENE FLUORIDE (N-PVDF).
5. INLET/OUTLET CONNECTIONS:
3" DIA. MNPT OR BSPT
6. SUCTION PORT CONNECTIONS:
1-1/2" MNPT OR BSPT
7. FOR INSTALLATION RECOMMENDATIONS REFER TO MAZZEI TECHNICAL BULLETINS No. 4, No. 5, No. 6, No. 10 AND No. 11, WHICH CAN BE FOUND AT WWW.MAZZEI.NET.
8. MAZZEI INJECTOR CO., LLC.
500 ROOSTER DR.
BAKERSFIELD, CA 93307
TEL: 661.363.6500
WEB: WWW.MAZZEI.NET




UNLESS OTHERWISE SPECIFIED DIMENSIONS ARE IN INCHES			TITLE: 3" INJECTOR; MODEL 3090		
DRAWN: J. PEREZ	DATE: 5/19/2015		DRAWING NO.: 3090		
APPROVED: T. JOHNS	SIZE: A	WEIGHT: N/A	SCALE: 1:4	REV.: B	SHEET: 1 OF 2



(ISOMETRIC VIEW)
(FOR REFERENCE ONLY)

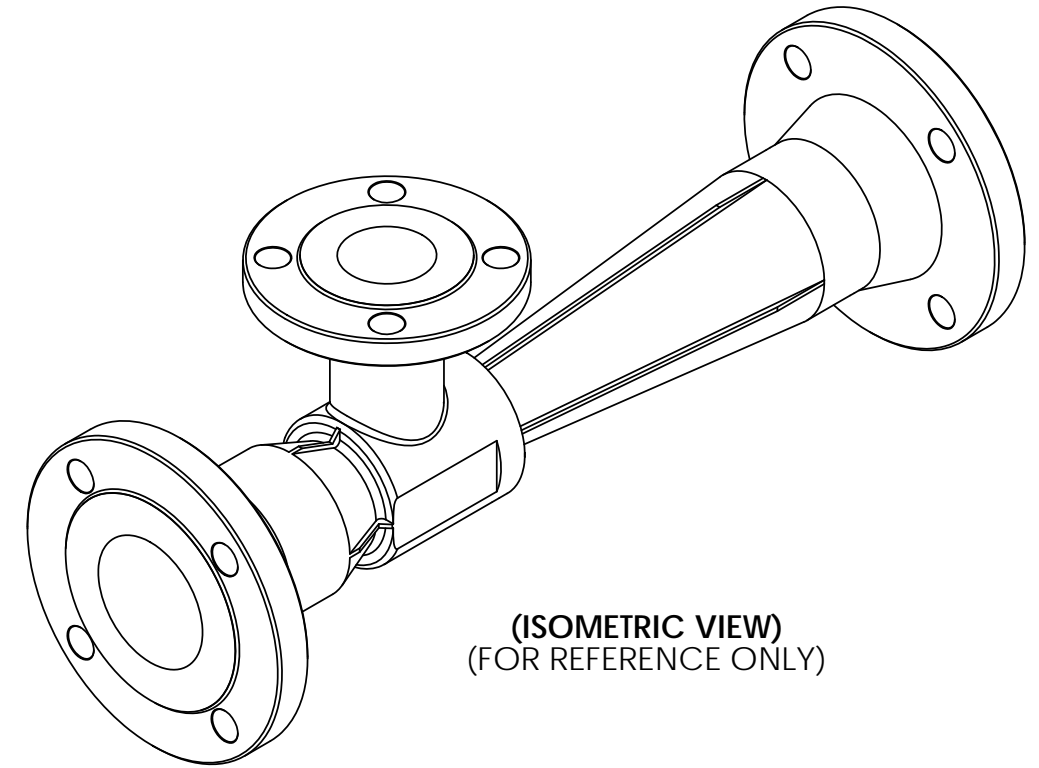


UNLESS OTHERWISE SPECIFIED DIMENSIONS ARE IN INCHES			TITLE: 3" INJECTOR; MODEL 3090		
DRAWN: J. PEREZ	DATE: 5/19/2015		DRAWING NO.: 3090		
APPROVED: T. JOHNS	SIZE: A	WEIGHT: N/A	SCALE: 1:4	REV.: B	SHEET: 2 OF 2

NOTES:

1. MATERIAL OF CONSTRUCTION: CD3MN, STAINLESS STEEL
2. MTR/HEAT NUMBERS ARE PROVIDED AND SHALL MEET APPLICABLE MATERIAL SPECIFICATIONS.
3. FLANGE BOLTS HOLES TO STRADDLE COMMON CENTERLINES, UNLESS OTHERWISE NOTED.
4. INLET/OUTLET CONNECTION:
3" DIA., ANSI B16.5, CLASS 150, SCHED. 40, RAISED FACE - WELD NECK FLANGE.
5. SUCTION PORT CONNECTION:
2" DIA., ANSI B16.5, CLASS 150, SCHED. 40, RAISED FACE - WELD NECK FLANGE.
6. WELDING JOINTS TO BE COMPLETE JOINT PENETRATION, WHERE POSSIBLE.
7. DYE PENETRATE TESTING IN ACCORDANCE WITH ASME B31.3 NORMAL SERVICE RECOMMENDATIONS WILL BE PERFORMED ON A MINIMUM OF 20% OF LINEAR LENGTH OF WELDS; OR HYDROSTATIC TESTING WILL BE PERFORMED AS PART OF MAZZEI'S NON-DESTRUCTIVE TESTING PROCEDURE.
8. CLEAN FOR PASSIVATION PER ASTM A380 GUIDELINES.
9. PASSIVATE PER ASTM A967 SPECIFICATION.
10. WELD MAP, NON DESTRUCTIVE TESTING (NDT), CLEANING AND INSPECTION REPORTS TO BE PROVIDED BY MAZZEI.
11. MAZZEI RECOMMENDS INSTALLING THE INJECTOR IN A HORIZONTAL POSITION OR IN A VERTICAL POSITION WITH THE LIQUID FLOW UP. MAZZEI DOESN'T HAVE ANY PREFERENCE FOR THE POSITION OF THE GAS CONNECTION, IT CAN POINT IN ANY DIRECTION, TOP, BOTTOM OR ON THE SIDE.

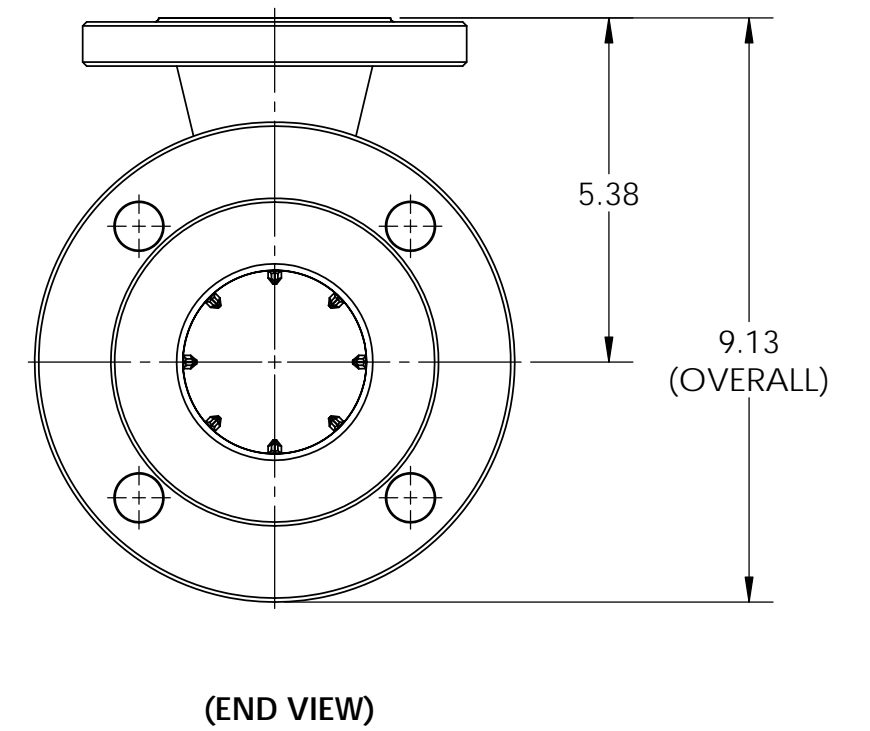
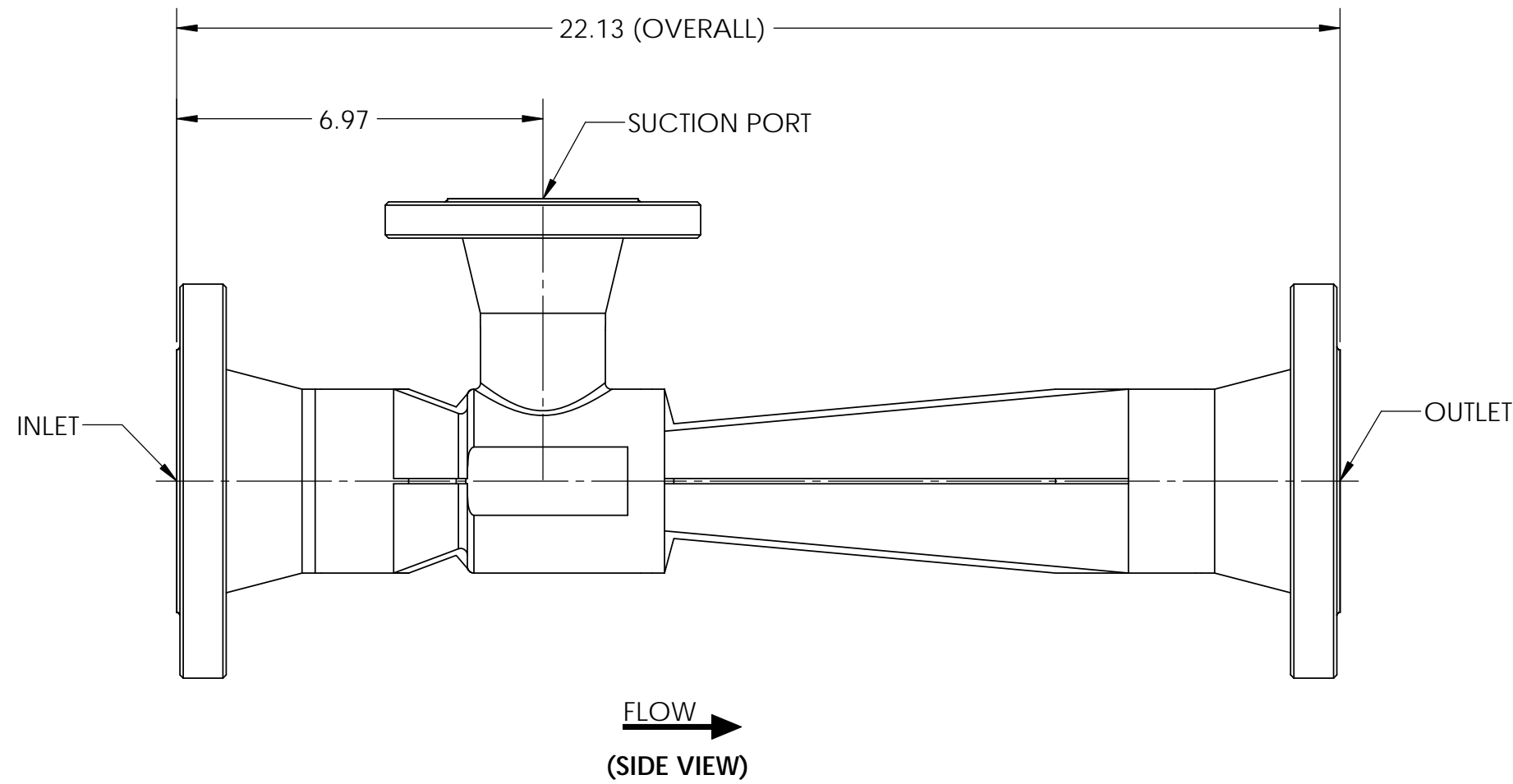
REVISIONS			
REV.	DESCRIPTION	DATE	APPROVED
NC	RELEASED FOR SUBMITTAL.	1/28/2013	P. BANKOWSKI




(ISOMETRIC VIEW)
(FOR REFERENCE ONLY)

SUBMITTAL DRAWING

SUBMITTAL NOTICE	CONFIDENTIALITY NOTICE	UNLESS OTHERWISE SPECIFIED DIM ARE IN INCHES TOL ON ANGLE $\pm .1/2^\circ$ 1 PL $\pm .125$ 2 PL $\pm .060$ 3 PL $\pm .030$ INTERPRET DIM AND TOL PER ASME Y14.5M-1994	APPROVALS	DATE		MAZZEI INJECTOR CO., LLC 500 ROOSTER DRIVE BAKERSFIELD, CA 93307 PHONE: (661) 363-6500 FAX: (661)363-7500 WWW.MAZZEI.NET		
ANY RECOMMENDATIONS FOR PRODUCT AND/OR SYSTEM DESIGN, WHETHER CONTAINED IN A DOCUMENT, WITHIN THIS DRAWING, COMMUNICATED BY ELECTRONIC MEANS OR GIVEN VERBALLY, ARE INTENDED SOLELY AS GUIDELINES TO ACTUAL SYSTEM DESIGN. SAID RECOMMENDATIONS ARE BASED UPON INFORMATION SUPPLIED BY OTHERS, THE ACCURACY OF WHICH IS BEYOND VERIFICATION BY MAZZEI INJECTOR CO. LLC. THEREFOR MAZZEI CANNOT AND DOES NOT WARRANT THE SUITABILITY OF ITS PRODUCTS FOR A PARTICULAR SERVICE NOR THE PERFORMANCE OF ANY SYSTEM CONTAINING COMPONENTS MADE OR SOLD BY MAZZEI.	THE INFORMATION CONTAINED IN THIS DRAWING IS THE SOLE PROPERTY OF MAZZEI INJECTOR COMPANY LLC. ANY REPRODUCTION IN PART OR AS A WHOLE WITHOUT THE WRITTEN PERMISSION OF MAZZEI IS STRICTLY PROHIBITED.	THIRD ANGLE PROJECTION	DRAWN: T. JOHNS	1/24/2013	INJECTOR; MODEL SSC3090-M			
			CHECKED: J. BENNETT	1/28/2013				
			APPROVED: P. BANKOWSKI	1/28/2013	SIZE: B	JOB NO.: NA	DRAWING NUMBER: SSC03090MAA00-SUB	REV: NC
	DRAWING MAY NOT BE PRINTED FULL SIZE DO NOT SCALE		CUSTOMER APPROVAL: -		SCALE: NONE	WEIGHT: 41 LBS	SHEET: 1 OF 2	

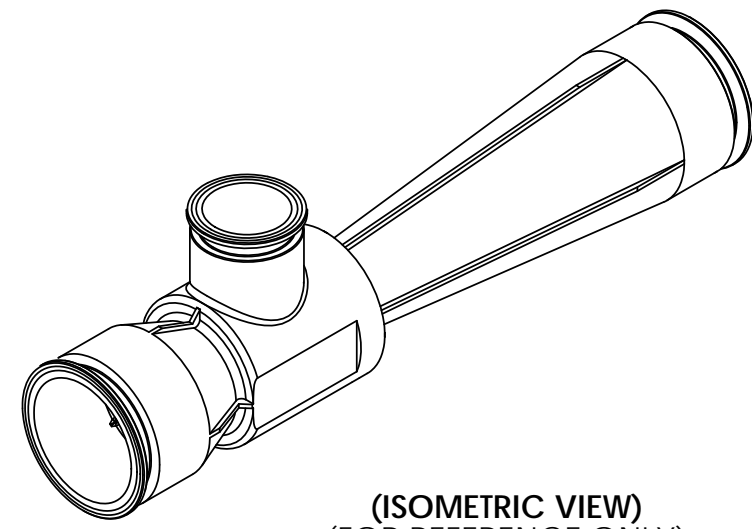


		MAZZEI INJECTOR CO., LLC 500 ROOSTER DRIVE BAKERSFIELD, CA 93307 PHONE: (661) 363-6500 FAX: (661)363-7500 WWW.MAZZEI.NET	
		TITLE: INJECTOR; MODEL SSC3090-M	
SIZE:	JOB NO.:	DRAWING NUMBER:	REV.:
B	NA	SSC03090MAA00-SUB	NC
SCALE:	WEIGHT:	SHEET:	
1:3	41 LBS	2 OF 2	

REVISIONS			
REV.	DESCRIPTION	DATE	APPROVED
NC	RELEASED FOR SUBMITTAL.	6/5/2013	P. BANKOWSKI


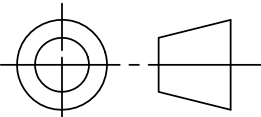
NOTES:

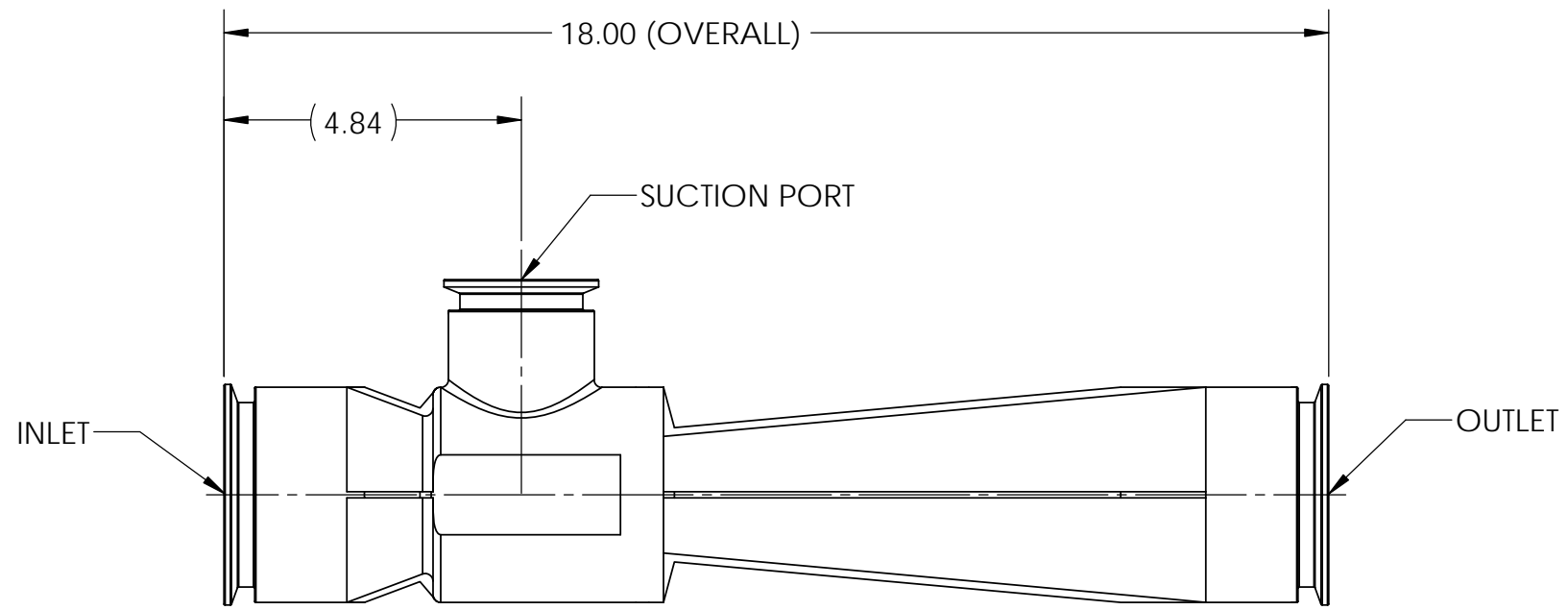
- MATERIAL OF CONSTRUCTION: CD3MN, STAINLESS STEEL
- MTR/HEAT NUMBERS ARE PROVIDED AND SHALL MEET APPLICABLE MATERIAL SPECIFICATIONS.
- INLET/OUTLET CONNECTION:
3" DIA., SANITARY TRI-CLAMP FITTING
MATERIAL: CD3MN
SPECIFICATION: ASME BPE-2009
- SUCTION PORT CONNECTION:
2" DIA., SANITARY TRI-CLAMP FITTING
MATERIAL: CD3MN
SPECIFICATION: ASME BPE-2009
- WELDING JOINTS TO BE COMPLETE JOINT PENETRATION, WHERE POSSIBLE.
- DYE PENETRANT TESTING IN ACCORDANCE WITH ASME B31.3 NORMAL SERVICE RECOMMENDATIONS WILL BE PERFORMED ON A MINIMUM OF 20% OF LINEAR LENGTH OF WELDS; OR HYDROSTATIC TESTING WILL BE PERFORMED AS PART OF MAZZEI'S NON-DESTRUCTIVE TESTING PROCEDURE.
- CLEANED FOR PASSIVATION PER ASTM A380 GUIDELINES.
- PASSIVATED PER ASTM A967 SPECIFICATION.
- WELD MAP, NON DESTRUCTIVE TESTING (NDT), CLEANING AND INSPECTION REPORTS TO BE PROVIDED BY MAZZEI.
- MAZZEI RECOMMENDS INSTALLING THE INJECTOR IN A HORIZONTAL POSITION. INJECTORS MAY BE INSTALLED IN A VERTICAL POSITION WITH THE LIQUID FLOW UPWARDS. HOWEVER, IN CERTAIN APPLICATIONS THIS MAY AFFECT PERFORMANCE. PLEASE REFER TO MAZZEI TECHNICAL BULLETIN No. 11; "MAZZEI INJECTOR INSTALLATION RECOMMENDATIONS FOR GAS TO LIQUID MIXING APPLICATIONS".



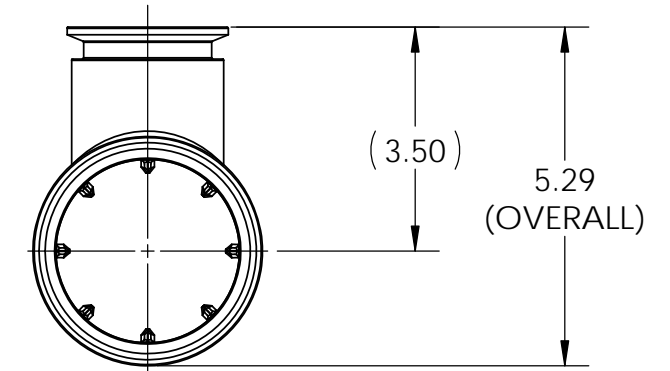
(ISOMETRIC VIEW)
(FOR REFERENCE ONLY)

SUBMITTAL DRAWING


SUBMITTAL NOTICE		CONFIDENTIALITY NOTICE		UNLESS OTHERWISE SPECIFIED DIM ARE IN INCHES TOL ON ANGLE $\pm .1/2^\circ$ 1 PL $\pm .125$ 2 PL $\pm .060$ 3 PL $\pm .030$ INTERPRET DIM AND TOL PER ASME Y14.5M-1994		APPROVALS		DATE		 MAZZEI INJECTOR CO., LLC 500 ROOSTER DRIVE BAKERSFIELD, CA 93307 PHONE: (661) 363-6500 FAX: (661)363-7500 WWW.MAZZEI.NET					
ANY RECCOMENDATIONS FOR PRODUCT AND/OR SYSTEM DESIGN, WHETHER CONTAINED IN A DOCUMENT, WITHIN THIS DRAWING, COMMUNICATED BY ELECTRONIC MEANS OR GIVEN VERBALLY, ARE INTENDED SOLELY AS GUIDELINES TO ACTUAL SYSTEM DESIGN. SAID RECCOMENDATIONS ARE BASED UPON INFORMATION SUPPLIED BY OTHERS, THE ACCURACY OF WHICH IS BEYOND VERIFICATION BY MAZZEI INJECTOR CO. LLC. THEREFOR MAZZEI CANNOT AND DOES NOT WARRANT THE SUITABILITY OF ITS PRODUCTS FOR A PARTICULAR SERVICE NOR THE PERFORMANCE OF ANY SYSTEM CONTAINING COMPONENTS MADE OR SOLD BY MAZZEI.		THE INFORMATION CONTAINED IN THIS DRAWING IS THE SOLE PROPERTY OF MAZZEI INJECTOR COMPANY LLC. ANY REPRODUCTION IN PART OR AS A WHOLE WITHOUT THE WRITTEN PERMISSION OF MAZZEI IS STRICTLY PROHIBITED.		THIRD ANGLE PROJECTION 		DRAWN: T. JOHNS		6/5/2013				INJECTOR; MODEL SSC3090-M			
DRAWING MAY NOT BE PRINTED FULL SIZE DO NOT SCALE						CHECKED: J. MILLAN		6/3/2013		APPROVED: P. BANKOWSKI				6/5/2013	
				QA: -		CUSTOMER APPROVAL: -		SIZE: B		JOB NO.: NA		DRAWING NUMBER: SSC03090MBB00-SUB		REV: NC	
				CUSTOMER: NA		SCALE: NONE		WEIGHT: 15 LBS		SHEET: 1 OF 2					



FLOW →
(SIDE VIEW)



(END VIEW)

		MAZZEI INJECTOR CO., LLC 500 ROOSTER DRIVE BAKERSFIELD, CA 93307 PHONE: (661) 363-6500 FAX: (661)363-7500 WWW.MAZZEI.NET		
		TITLE: INJECTOR; MODEL SSC3090-M		
SIZE:	JOB NO.:	DRAWING NUMBER:	REV.:	
B	NA	SSC03090MBB00-SUB	NC	
SCALE:	WEIGHT:	SHEET:		
1:3	15 LBS	2 OF 2		



Injector Performance Table
Water Suction Capacity

Operating Pressure PSIG		WATER SUCTION		Operating Pressure PSIG		WATER SUCTION	
Injector INLET	Injector OUTLET	Motive Flow GPM	Water Suction GPM	Injector INLET	Injector OUTLET	Motive Flow GPM	Water Suction GPM
5	0	76.4	17.5	60	0	265	20.7
	1		15.0		5		20.7
	2		12.6		10		20.7
	3		7.6		15		20.7
	4		*(4.0)		20		20.7
10	0	108	24.1		25		20.7
	2		24.1		30		20.6
	5		14.5		35		18.7
	7		6.6		40		12.6
	8		*(8.5)		45		5.6
15	0	132	23.9	70	0	286	20.5
	5		23.8		5		20.5
	7		17.3		10		20.5
	10		9.2		15		20.5
	12		*(13.5)		20		20.5
20	0	153	23.6		30		20.4
	5		23.6		35		20.5
	10		19.5		40		20.1
	12		13.2		45		18.3
	15		*(17.0)		50		12.0
25	0	171	22.4	55	6.7		
	5		22.3	80	305	0	12.5
	10		22.6			5	20.5
	15		15.5			10	20.5
	20		*(21.5)			15	20.5
30	0	187	21.8			20	20.5
	5		21.8			30	20.5
	10		21.8			35	20.5
	15		21.3			40	20.5
	20		9.6			45	20.5
	25		*(25.5)			50	19.3
35	0	202	21.5	55	14.9		
	5		21.5	60	9.9		
	10		21.1	65	*(67.5)		
	15		19.8	90	324	0	20.5
	20		15.1			5	20.5
	25		*(29.5)			6	20.5
40	0	216	20.9			20	20.5
	5		20.9			30	20.5
	10		20.9			40	20.5
	15		20.9			45	20.5
	20		18.5			50	20.5
	25		11.8			55	20.5
	30		*(32.5)			60	18.1
45	0	229	21.0	65	12.6		
	5		21.0	70	7.7		
	10		21.0	75	*(76.5)		
	15		20.9	100	342	0	20.5
	20		20.0			5	20.5
	25		16.0			10	20.5
	30		9.6			20	20.5
35	*(36.0)	30	20.5				
50	0	241	20.6			40	20.5
	5		20.6			50	20.5
	10		20.6			60	20.4
	15		20.6			65	19.3
	20		20.6			70	15.7
	25		19.9	75	10.6		
	30		14.7	80	*(85.0)		
	35		8.3				
	40		*(40.5)				

Model 3090

Copyright© 2016 REV 2014

Mazzei Injector Company, LLC
 500 Rooster Drive, Bakersfield, CA 93307-9555 USA

TEL 661.363.6500 • FAX 661.363.7500 • www.mazzei.net

**NUMBERS IN PARENTHESIS indicate the injector outlet pressure when suction stops (Zero Suction Point).*



Injector Performance Table
Water Suction Capacity - METRIC

Operating Pressure kg/cm ²		WATER SUCTION		Operating Pressure kg/cm ²		WATER SUCTION			
Injector INLET	Injector OUTLET	Motive Flow l/min	Water Suction l/min	Injector INLET	Injector OUTLET	Motive Flow l/min	Water Suction l/min		
0.35	0.00	289	66.2	4.22	0.00	1,001	78.3		
	0.07		56.7		0.35		78.3		
	0.14		47.8		0.70		78.3		
	0.21		28.7		1.05		78.3		
	0.28		*(0.28)		1.41		78.4		
0.70	0.00	409	91.2		1.76		78.3		
	0.14		91.3		2.11		78.0		
	0.35		55.0		2.46		71.0		
	0.49		24.9		2.81		47.9		
	0.56		*(0.60)		3.16		21.4		
	3.16		*(3.44)		3.16		21.4		
1.05	0.00	501	90.4		4.92		0.00	1,082	77.5
	0.35		90.0				0.35		77.5
	0.49		65.7				0.70		77.5
	0.70		34.9				1.05		77.5
	0.84		18.9	1.41		77.5			
1.41	0.00	578	89.3	2.11		77.4			
	0.35		89.3	2.46		77.5			
	0.70		73.8	2.81		76.2			
	0.84		49.9	3.16		69.3			
	1.05		27.2	3.52		45.4			
1.76	0.00	646	84.7	3.87		25.3			
	0.35		84.5	4.22		25.3			
	0.70		85.6	4.57		25.3			
	1.05		58.6	4.92		25.3			
	1.41		7.1	5.27		25.3			
2.11	0.00	708	82.5	5.62	0.00	1,156	77.5		
	0.35		82.6		0.35		77.5		
	0.70		82.5		0.70		77.5		
	1.05		80.8		1.05		77.5		
	1.41		36.4		1.41		77.5		
	1.76		*(1.79)		1.76		77.5		
2.46	0.00	765	81.3		2.11		77.5		
	0.35		81.3		2.46		77.5		
	0.70		79.8		2.81		77.5		
	1.05		80.0		3.16		77.5		
	1.41		57.1		3.52		73.0		
	1.76		24.8		3.87		56.6		
2.81	0.00	818	79.1		4.22		37.4		
	0.35		79.1		4.57		18.9		
	0.70		79.1		0.00		77.5		
	1.05		79.2	0.35	77.5				
	1.41		70.0	0.70	77.5				
	1.76		44.9	1.41	77.5				
	2.11		14.5	2.11	77.5				
3.16	0.00	867	79.4	6.33	0.00	1,226	77.5		
	0.35		79.4		0.35		77.5		
	0.70		79.4		0.70		77.5		
	1.05		79.3		1.41		77.5		
	1.41		79.0		2.11		77.5		
	1.76		60.6		2.81		77.5		
	2.11		36.5		3.16		77.7		
2.46	*(2.53)	3.52	77.8						
3.52	0.00	914	77.9		4.22		68.7		
	0.35		77.9		4.57		47.6		
	0.70		77.9		4.92		29.3		
	1.05		77.9		5.27		29.3		
	1.41		78.0		5.62		29.3		
	1.76		75.3		0.00		77.5		
	2.11		55.6		0.35		77.5		
	2.46		31.5	0.70	77.5				
	2.81		*(2.85)	1.41	77.5				

**NUMBERS IN PARENTHESIS indicate the injector outlet pressure when suction stops (Zero Suction Point).*

Model 3090



Injector Performance Table
Air Suction Capacity

Operating Pressure PSIG		AIR SUCTION		Operating Pressure PSIG		AIR SUCTION	
Injector INLET	Injector OUTLET	Motive Flow GPM	Air Suction SCFM	Injector INLET	Injector OUTLET	Motive Flow GPM	Air Suction SCFM
5	0	76		60	0	257	35.83
	1		4.51		5		31.67
	2		1.34		10		22.75
	3		0.67		15		9.95
	4		*(4.1)		20		7.00
10	0	106	6.86	70	0	277	37.42
	2		4.28		5		31.17
	5		1.43		10		13.23
	7		0.71		15		9.17
	8		*(8.5)		20		5.25
15	0	129	13.29	80	0	297	38.67
	5		3.18		5		35.17
	7				10		20.17
	10		1.91		15		11.78
	12		*(13.5)		20		7.03
20	0	149	17.93	90	0	315	4.25
	5		5.46		5		2.55
	10		2.00		10		1.58
	12		1.46		15		1.30
	15		*(17.0)		20		1.32
25	0	167	21.80	100	0	332	38.25
	5		8.66		5		33.33
	10		3.28		10		14.38
	15		1.58		15		8.62
	20		*(21.5)		20		5.53
30	0	183	24.72	120	0	363	39.08
	5		15.05		5		37.00
	10		4.63		10		26.67
	15		2.44		15		14.00
	20		1.39		20		9.98
35	0	197	27.40	150	0	405	7.12
	5		20.98		5		4.93
	10		6.30		10		3.37
	15		3.57		15		2.38
	20		1.98		20		1.75
40	0	211	29.52	180	0	450	1.38
	5		21.63		5		1.38
	10		8.16		10		1.38
	15		4.81		15		1.38
	20		2.92		20		1.38
45	0	223	31.42	210	0	500	1.38
	5		24.50		5		1.38
	10		10.12		10		1.38
	15		5.86		15		1.38
	20		3.84		20		1.38
50	0	236	32.92	240	0	550	1.38
	5		27.08		5		1.38
	10		12.76		10		1.38
	15		7.19		15		1.38
	20		4.90		20		1.38
55	0	250	34.42	270	0	600	1.38
	5		28.58		5		1.38
	10		14.26		10		1.38
	15		8.69		15		1.38
	20		5.40		20		1.38
60	0	264	35.92	300	0	650	1.38
	5		30.08		5		1.38
	10		15.76		10		1.38
	15		10.19		15		1.38
	20		6.90		20		1.38
65	0	278	37.42	330	0	700	1.38
	5		31.58		5		1.38
	10		17.26		10		1.38
	15		11.69		15		1.38
	20		8.40		20		1.38
70	0	292	38.92	360	0	750	1.38
	5		33.08		5		1.38
	10		18.76		10		1.38
	15		13.19		15		1.38
	20		9.90		20		1.38
75	0	306	40.42	390	0	800	1.38
	5		34.58		5		1.38
	10		20.26		10		1.38
	15		14.69		15		1.38
	20		11.40		20		1.38
80	0	320	41.92	420	0	850	1.38
	5		36.08		5		1.38
	10		21.76		10		1.38
	15		16.19		15		1.38
	20		12.90		20		1.38
85	0	334	43.42	450	0	900	1.38
	5		37.58		5		1.38
	10		23.26		10		1.38
	15		17.69		15		1.38
	20		14.40		20		1.38
90	0	348	44.92	480	0	950	1.38
	5		39.08		5		1.38
	10		24.76		10		1.38
	15		19.19		15		1.38
	20		15.90		20		1.38
95	0	362	46.42	510	0	1000	1.38
	5		40.58		5		1.38
	10		26.26		10		1.38
	15		20.69		15		1.38
	20		17.40		20		1.38
100	0	376	47.92	540	0	1050	1.38
	5		42.08		5		1.38
	10		27.76		10		1.38
	15		22.19		15		1.38
	20		18.90		20		1.38
105	0	390	49.42	570	0	1100	1.38
	5		43.58		5		1.38
	10		29.26		10		1.38
	15		23.69		15		1.38
	20		20.40		20		1.38
110	0	404	50.92	600	0	1150	1.38
	5		45.08		5		1.38
	10		30.76		10		1.38
	15		25.19		15		1.38
	20		21.90		20		1.38
115	0	418	52.42	630	0	1200	1.38
	5		46.58		5		1.38
	10		32.26		10		1.38
	15		26.69		15		1.38
	20		23.40		20		1.38
120	0	432	53.92	660	0	1250	1.38
	5		48.08		5		1.38
	10		33.76		10		1.38
	15		28.19		15		1.38
	20		24.90		20		1.38
125	0	446	55.42	690	0	1300	1.38
	5		49.58		5		1.38
	10		35.26		10		1.38
	15		29.69		15		1.38
	20		26.40		20		1.38
130	0	460	56.92	720	0	1350	1.38
	5		51.08		5		1.38
	10		36.76		10		1.38
	15		31.19		15		1.38
	20		27.90		20		1.38
135	0	474	58.42	750	0	1400	1.38
	5		52.58		5		1.38
	10		38.26		10		1.38
	15		32.69		15		1.38
	20		29.40		20		1.38
140	0	488	59.92	780	0	1450	1.38
	5		54.74		5		1.38
	10		40.42		10		1.38
	15		34.85		15		1.38
	20		31.56		20		1.38
145	0	502	61.42	810	0	1500	1.38
	5		56.26		5		1.38
	10		41.94		10		1.38
	15		36.37		15		1.38
	20		33.08		20		1.38
150	0	516	62.92	840	0	1550	1.38
	5		57.74		5		1.38
	10		43.42		10		1.38
	15		37.85		15		1.38
	20		34.56		20		1.38
155	0	530	64.42	870	0	1600	1.38
	5		59.26		5		1.38
	10		44.94		10		1.38
	15		39.37		15		1.38
	20		36.08		20		1.38
160	0	544	65.92	900	0	1650	1.38
	5		60.74		5		1.38
	10		46.42		10		1.38
	15		40.85		15		1.38
	20		37.56		20		1.38
165	0	558	67.42	930	0	1700	1.38
	5		62.26		5		1.38
	10		48.14		10		1.38
	15		42.57		15		1.38
	20		39.28		20		1.38
170	0	572	68.92	960	0	1750	1.38
	5		63.74		5		1.38
	10		49.82		10		1.38
	15		44.25		15		1.38
	20		40.96		20		1.38
175	0	586	70.42	990	0	1800	1.38
	5		65.58		5		1.38
	10		51.06		10		1.38
	15		45.49		15		1.38
	20		42.20		20		1.38
180	0	600	71.92	1020	0	1850	1.38
	5		67.08		5		1.38
	10		52.56		10		1.38
	15		46.99		15		1.38
	20		43.70		20		1.38
185	0	614	73.42	1050	0	1900	1.38
	5		68.26		5		1.38
	10		53.74		10		1.38
	15		48.17		15		1.38
	20		44.88		20		1.38
190	0	628	74.92	1080	0	1950	1.38
	5		69.74		5		1.38
	10		55.22		10		1.38
	15		49.65		15		1.38
	20		46.36		20		1.38
195	0	642	76.42	1110	0	2000	1.38
	5		71.26		5		1.38
	10		56.74		10		1.38
	15		51.17		15		1.38
	20		47.88		20		1.38
200	0	656	77.92	1140	0	2050	1.38
	5		72.74		5		1.38
	10		58.22		10		1.38
	15		52.65		15		1.38
	20		49.36		20		1.38
205	0	670	79.42	1170	0	2100	1.38
	5		74.26		5		1.38
	10		59.74		10		1.38
	15		54.17		15		1.38
	20		50.88		20		1.38
210	0	684	80.92	1200	0	2150	1.38
	5		75.74		5		1.38
	10		61.22		10		1.38
	15		55.65		15		1.38
	20		52.36		20		1.38
215	0	698	82.42	1230	0	2200	1.38
	5		77.58		5		1.38
	10		63.06		10		1.38
	15		57.49		15		1.38
	20		54.20		20		1.38
220	0	712	83.92	1260	0	2250	1.38
	5		79.08		5		1.38
	10		64.56		10		1.38
	15		58.99		15		1.38
	20		55.70		20		1.38
225	0	726	85.42	1290	0	2300	1.38
	5		80.26		5		1.38
	10		65.74		10		1.38
	15		60.17		15		1.38
	20		56.88		20		1.38
230	0	740	86.92	1320	0	2350	1.38
	5		81.74		5		1.38
	10		67.22		10		1.38
	15		61.65		15		1.38



Injector Performance Table
Air Suction Capacity - METRIC

Operating Pressure kg/cm ²		AIR SUCTION		Operating Pressure kg/cm ²		AIR SUCTION	
Injector INLET	Injector OUTLET	Motive Flow l/min	Air Suction l/min	Injector INLET	Injector OUTLET	Motive Flow l/min	Air Suction l/min
0.35	0.00	287		4.22	0.00	974	1,015
	0.07		128		0.35		897
	0.14		37.8		0.70		644
	0.21		18.9		1.05		282
	0.28		*(0.29)		1.41		198
0.70	0.00	402	194	4.92	0.00	1,050	104
	0.14		121		0.35		73.6
	0.35		40.4		0.70		54.3
	0.49		20.0		1.05		40.6
	0.56		*(0.60)		1.41		37.3
1.05	0.00	490	376	5.62	0.00	1,126	1,060
	0.35		90.0		0.35		883
	0.49		54.1		0.70		375
	0.70		27.1		1.05		260
	0.84		*(0.95)		1.41		149
1.41	0.00	566	508	6.33	0.00	1,194	85.9
	0.35		155		0.35		64.7
	0.70		56.7		0.70		49.6
	0.84		41.2		1.05		37.3
	1.05		*(1.20)		1.41		37.3
1.76	0.00	632	617	7.03	0.00	1,258	1,095
	0.35		245		0.35		996
	0.70		93.0		0.70		571
	1.05		44.6		1.05		334
	1.41		*(1.51)		1.41		199
2.11	0.00	693	700	8.44	0.00	1,376	120
	0.35		426		0.35		72.2
	0.70		131		0.70		44.8
	1.05		69.0		1.05		36.8
	1.41		39.4		1.41		36.8
	1.76		*(1.79)		1.76		36.8
2.46	0.00	745	776	8.44	0.00	1,376	1,083
	0.35		594		0.35		944
	0.70		178		0.70		407
	1.05		101		1.05		244
	1.41		55.9		1.41		157
	1.76		*(2.07)		1.76		99.1
2.81	0.00	800	836	8.44	0.00	1,376	59.9
	0.35		613		0.35		41.5
	0.70		231		0.70		33.0
	1.05		136		1.05		33.0
	1.41		82.8		1.41		33.0
	1.76		50.7		1.76		33.0
3.16	0.00	846	890	8.44	0.00	1,376	1,084
	0.35		694		0.35		991
	0.70		287		0.70		533
	1.05		166		1.05		295
	1.41		109		1.41		200
	1.76		69.6		1.76		131
	2.11		43.6		2.11		82.1
	2.46		*(2.53)		2.46		58.1
3.52	0.00	893	932	8.44	0.00	1,376	40.1
	0.35		767		0.35		1,107
	0.70		361		0.70		1,048
	1.05		204		1.05		755
	1.41		139		1.41		397
	1.76		95.1		1.76		283
	2.11		64.3		2.11		202
	2.46		43.5		2.46		140
	2.81		*(2.85)		2.81		95.3

Model 3090

Copyright© 2016 REV 07-2016

Mazzei Injector Company, LLC
 500 Rooster Drive, Bakersfield, CA 93307-9555 USA

TEL 661.363.6500 • FAX 661.363.7500 • www.mazzei.net

**NUMBERS IN PARENTHESIS indicate the injector outlet pressure when suction stops (Zero Suction Point).*